

Quest® GPOADmin

Simplified Group Policy Management and Administration

As one of the most robust configuration tools in your Windows infrastructure, Group Policy plays a major role in establishing a secure and compliant networking environment for your users. But with Group Policy regulating everything from critical business processes and security settings to individual workstations and printers, managing and administering Group Policy Objects (GPO) can become a time-consuming and expensive task without the right tools.

Award-winning Quest GPOADmin automates critical group policy management tasks to reduce costs and eliminate manual processes. GPOADmin extends the Microsoft Group Policy Management Console (GPMC) so you can quickly and effectively administer GPO changes and verify and compare GPO versions over time to confirm the consistency of different GPO settings.

With so many GPO comparison features combined with enhanced security capabilities, you'll be able to more effectively control and manage your Windows infrastructure—while driving compliance to corporate policies, regulatory standards and frameworks such as ITIL, MOF, SOX, Basel II, HIPAA, and C-198.

Improves and Simplifies Native Group Policy Capabilities

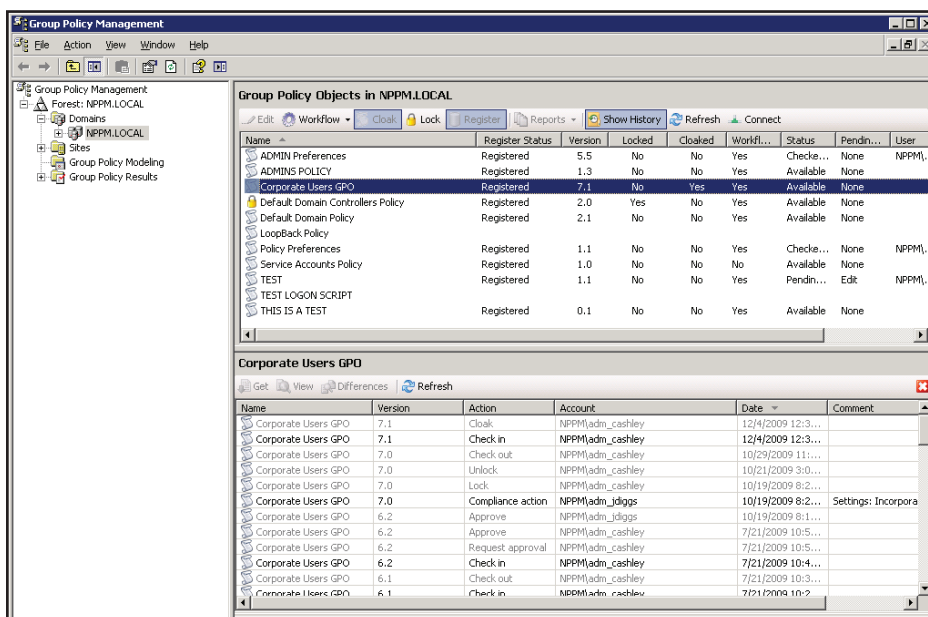
GPOADmin extends the power of the Microsoft GPMC, eliminating the need to learn yet another third-party interface. With no need for scripting or manual processes, you can save valuable time, reduce the risk of network outages, and drive improved server and desktop management throughout your entire enterprise.

Streamline Compliance and Increase Reliability with Improved GPO Auditing

Effective Group Policy auditing reduces security breaches, eases regulatory compliance requirements and increases the overall reliability of your Windows infrastructure. GPOADmin

Key Features & Benefits

- Approval-Based Workflow: automatically follow a configurable GPO review and approval workflow process
- Tracks the request, review, and approval process with comments and e-mail notifications at any stage
- Closes the gap in the native GPO management process by automating critical tasks
- Helps prove compliance to ITIL, MOF, SOX, Basel II, HIPAA, and C-198 with advanced GPO auditing and tracking



GPOADmin snaps into the Microsoft Group Policy Management Console (GPMC) to help streamline and automate critical tasks and provide enhanced auditing, version control and reporting capabilities.

DATASHEET

integrates with current processes to ensure critical tasks such as version control and auditing are performed efficiently and effectively. Automatically ensure that all GPO versions and edits are recorded, creating a log of each setting change—as well as the individual who executed the change—for audit and rollback purposes.

Group Policy Objects in NPPM.LOCAL

Name	Type	Version
ADMIN Preferences	Registered	5.5
ADMINS POLICY	Registered	1.3
Corporate Users GPO	Registered	7.0
Default Domain Controllers Policy	Registered	2.0
Default Domain Policy	Registered	2.1
LoopBack Policy		
Policy Preferences	Registered	1.1
Service Accounts Policy	Registered	1.0
TEST	Registered	1.1
TEST LOGON SCRIPT		

Industry-leading GPO comparison capabilities ensure the integrity of GPO settings and reduce the risk of policy violations.

History - ADMIN Preferences

Name	Type	Version	Action	Account	Date	Commer
ADMIN Preferences	Group Policy Obj...	5.5	Check in	NPPM\adm_cashley	11/2/2009 11:49:12 AM	
ADMIN Preferences	Group Policy Obj...	5.4	Check in	NPPM\adm_cashley	10/29/2009 11:32:26 AM	
ADMIN Preferences	Group Policy Obj...	5.3	Check in	NPPM\adm_cashley	10/29/2009 11:29:48 AM	
ADMIN Preferences	Group Policy Obj...	5.2	Check in	NPPM\adm_cashley	10/29/2009 11:26:06 AM	
ADMIN Preferences	Group Policy Obj...	5.1	Check out	NPPM\adm_cashley	10/29/2009 11:02:35 AM	
ADMIN Preferences	Group Policy Obj...	5.1	Check in	NPPM\adm_cashley	7/21/2009 9:10:12 AM	
ADMIN Preferences	Group Policy Obj...	5.0	Deploy	NPPM\adm_cashley	6/15/2009 3:24:31 PM	
ADMIN Preferences	Group Policy Obj...	4.2	Check in	NPPM\adm_cashley	6/15/2009 3:23:22 PM	
ADMIN Preferences	Group Policy Obj...	4.1	Check in	NPPM\adm_cashley	6/15/2009 10:44:26 AM	
ADMIN Preferences	Group Policy Obj...	4.0	Deploy	NPPM\adm_cashley	6/15/2009 10:42:31 AM	
ADMIN Preferences	Group Policy Obj...	3.1	Check in	NPPM\adm_cashley	6/15/2009 10:41:40 AM	
ADMIN Preferences	Group Policy Obj...	3.0	Undo check out	NPPM\adm_cashley	6/15/2009 9:12:00 AM	
ADMIN Preferences	Group Policy Obj...	3.0	Check out	NPPM\adm_cashley	6/12/2009 1:25:03 PM	
ADMIN Preferences	Group Policy Obj...	3.0	Deploy	NPPM\adm_cashley	6/12/2009 12:42:57 PM	
ADMIN Preferences	Group Policy Obj...	2.1	Check in	NPPM\adm_cashley	6/12/2009 12:42:26 PM	
ADMIN Preferences	Group Policy Obj...	2.0	Compliance action	NPPM\adm_cashley	6/12/2009 12:34:38 PM	Settings:
ADMIN Preferences	Group Policy Obj...	1.0	Deploy	NPPM\adm_cashley	6/12/2009 12:21:48 PM	

From: 6/11/2009 12:00:00 AM To: 6/11/2009 12:00:00 AM

Events: Show All Events Include Labels Show Labels Only

User: Everyone

With GPOAdmin, you can easily rollback Group Policy Objects to their previous versions, eliminating any ill effects of an undesired change.

About Quest Software, Inc.

Now more than ever, organizations need to work smart and improve efficiency. Quest Software creates and supports smart systems management products—helping our customers solve everyday IT challenges faster and easier. Visit www.quest.com for more information.



2009 ADVANCED INFRASTRUCTURE SOLUTIONS
Active Directory
PARTNER OF THE YEAR
WINNER



5 Polaris Way, Aliso Viejo, CA 92656 | PHONE 800.306.9329 | WEB www.quest.com | E-MAIL sales@quest.com

If you are located outside North America, you can find your local office information on our Web site

© 2009 Quest Software, Inc.
ALL RIGHTS RESERVED

Quest Software is a registered trademark of Quest Software, Inc. in the U.S.A. and/or other countries. All other trademarks and registered trademarks are property of their respective owners.
DSW-GPOAdmin-US-MJ-20091209