

ES ENTERPRISE SECURITY REPORTER™ FOR SQL SERVER

Enterprise Security Reporter™ for SQL Server is an agent-less, fast, comprehensive reporting solution for Microsoft SQL Server that collects information on SQL databases, objects, permissions, users and roles. Pre-defined reports compile, query and analyze this data to give administrators a complete view of the security and integrity of their entire SQL Server environment.

Analyzing and reporting on the security of SQL Servers is a complex task with no easy solutions. Growing regulatory compliance requirements and the increasing number of attacks from both inside and outside the corporate network make security management and reporting a critical part of database administration. Since each database application can have very different access requirements, it's all too easy to leave unexpected security holes in your database infrastructure.

Enterprise Security Reporter for SQL Server focuses on enterprise-wide SQL Server security reporting. Using a fast, agent-less discovery system, ESR can collect vast amounts of information on SQL databases, objects, schemas, permissions, users and roles. ESR provides a powerful analysis engine that creates understandable, comprehensive reporting on all aspects of SQL Server security.

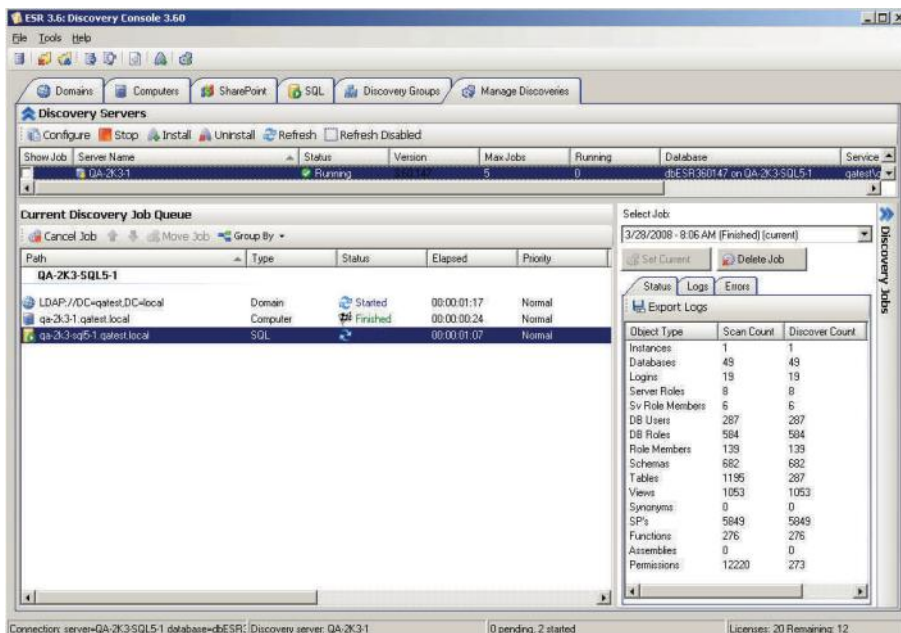
Enterprise Security Reporter offers comprehensive discovery and reporting on SQL Server database and object security and role memberships.

EASY, FAST AND THOROUGH REVIEWS OF SQL SERVER SECURITY

ESR's discovery engines remotely collect security information from SQL Servers and store it in a database for analysis and reporting. Servers, instances, and databases can be selected for individual discovery. The discovery console gives administrators complete control over defining discovery jobs, viewing job status and results across any number of discovery engines.

This data is then presented in reports that include:

- Database and object listings
- Database object and schema permissions
- Database user and server logins
- Database and server role memberships



SECURITY LIFECYCLE MAP

Assess	Assign	Audit
Accessibility		
Accountability		
Assurance		

<http://www.scriptlogic.com/slm>

KEY BENEFITS

Simplified Security Reporting

Centralized consoles allow for scheduling automated collection and reporting of security data. Results can also be emailed directly to necessary recipients making reporting on your enterprise an easy task.

Assists with Compliance

Proactive maintenance and reporting on access controls helps meet the requirements of regulatory and best practice standards.

Enhances Windows Security

Find weaknesses, over-exposed files, over privileged users and complete security audits in a fraction of the time.

KEY FEATURES

Pre-defined SQL Server Reports

Over a dozen pre-defined reports provide a detailed look at your entire SQL Server environment including SQL databases, objects, schemas, permissions, users and roles.

Distributed Discovery Servers

Placing discovery servers at remote sites further increases the speed of discovery and collection and reduces WAN traffic. Easily manage all discovery servers from a singlescreen.

Report Customization

Using the Report Composer, reports can be built using a simple wizard, without needing to know SQL statements. Those familiar with SQL can directly edit queries, if desired.

Ad-Hoc Query Builder

Quickly and easily build queries for any security data with a step-by-step, drag and drop query builder. Save and schedule queries and export results to Microsoft Excel for further analysis. Query settings can now be imported directly into the Report Composer making custom report creation easier than ever.

Automated Report Delivery

Reports can be scheduled and emailed via any SMTP-based email system. Delta Reports can now be scheduled to run the last two discoveries to see the latest changes.

